

# COLOUR CHART

Personalise your wheelchair and stand out from the crowd



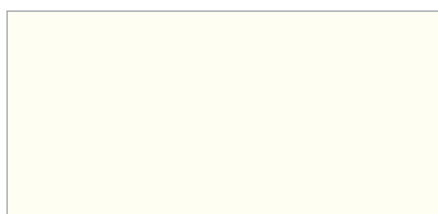
# EUROPE COLOUR CHART

## Quickie & Zippie

---

Choosing a colour is a very personal decision. From subtle to eye-catching, Quickie and Zippie offer the widest spectrum of possibilities. Just check out our versatile colour collection and see which colour suit you. The possibilities are endless!

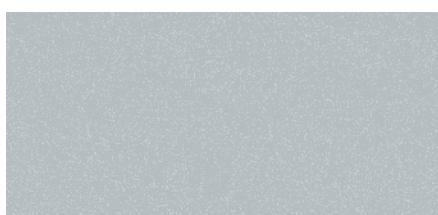
---



01. Classic White



02. Brilliant Silver



03. Matt Silver



04. Silver





06. Sun Yellow



07. Brilliant Lime



08. Matt Lime



14. Glossy Blue



15. Brilliant Marine



16. Matt Marine



19. Brilliant Purple



20. Matt Purple



21. Ruby Red

» Argon<sup>2</sup>

Brilliant Red (22)



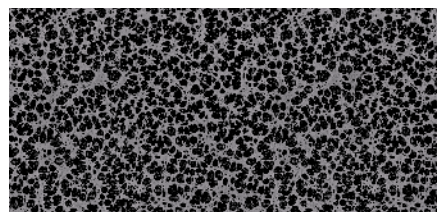
22. Brilliant Red



23. Matt Red



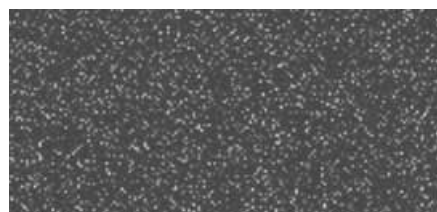
24. Tutti Frutti Orange



26. Silver Texture



27. Graphite Metallic

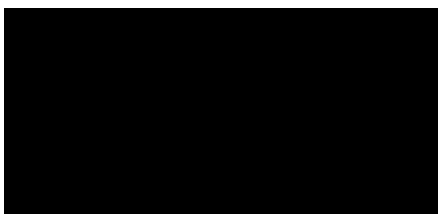


28. Platinum Metallic

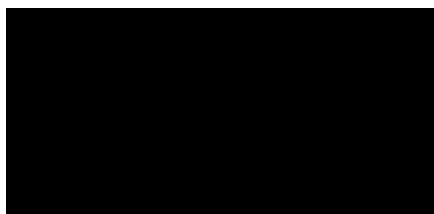




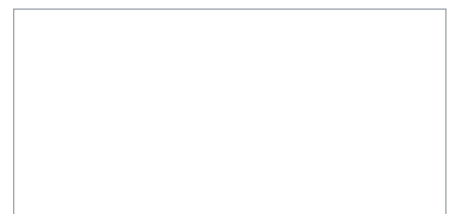
» Xenon<sup>2</sup>  
Signal White (32)



29. Classic Black



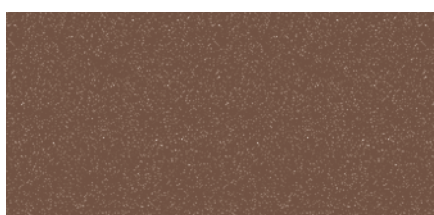
31. Matt Black



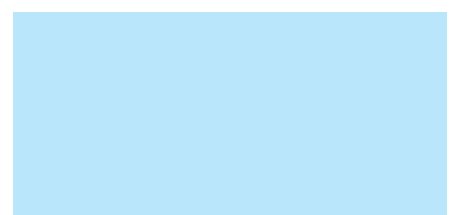
32. Signal White



33. Pink



34. Dark Chocolate Metallic



35. Sky Blue



36. Cyan Metallic



37. Mars Red



39. Cappucino



40. Kiwi Green



41. Flamingo Glitter



42. Matt Anthracite



43. Azure Blue



>> **Youngster 3** built4me

Flamingo Glitter, Sky Blue, Mars Red, Brilliant Lime, Sun Yellow, Brilliant Blue, Kiwi Green.





» Life RT  
Cyan Metallic (36)

Print processes cannot accurately represent paint finishes. Actual colours may vary. Colours and patterns may vary based on type of chair or frame material. Not all colours are available on all products. Please see product order form for specific colour options.

All information is subject to change without notification. Please consult Sunrise Medical with any queries you may have.

If you are visually impaired, this document can be viewed in PDF format at [www.SunriseMedical.eu](http://www.SunriseMedical.eu).



### Sunrise Medical GmbH & Co. KG

Kahlbachring 2-4  
69254 Malsch/HD  
Germany

Tel.: +49 (0) 72 53 / 9 80-0

Fax: +49 (0) 72 53 / 9 80-222

E-Mail: [international@sunrisemedical.de](mailto:international@sunrisemedical.de)

[www.SunriseMedical.eu](http://www.SunriseMedical.eu)