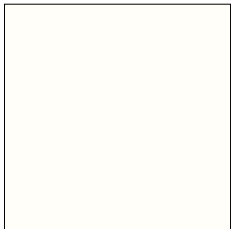


01 Weiss  
(RAL 9010)



32 Signal Weiß



06 Sonnengelb  
(RAL 1018)



24 Tutti Frutti  
Orange



37 Marsrot



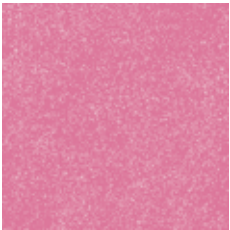
21 Rubinrot  
(RAL 3003)



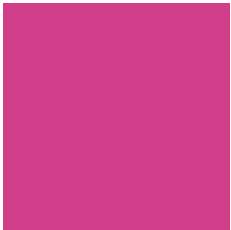
22 Brillantrot



23 Mattrot



41 Flamingo-Glitzer



33 Pink



36 Cyanmetallic



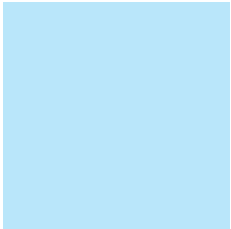
14 Blau



15 Brillantmarine



16 Mattmarine



35 Himmelblau



40 Kiwi

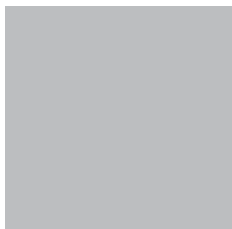


07 Brillantlimone

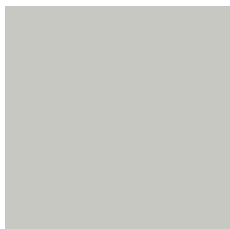


08 Mattlimone





02 Brillantsilber



03 Mattsilber



04 Silbermetallic



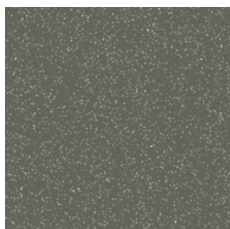
42 Mattanthrazit



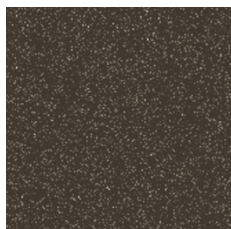
39 Cappuccino



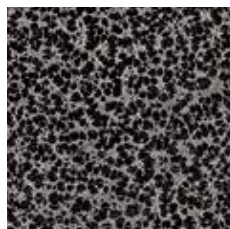
34 Dark Chocolate  
Metallic



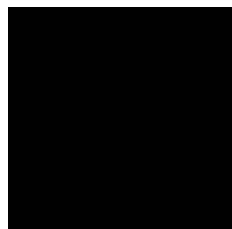
28 Platinmetallic



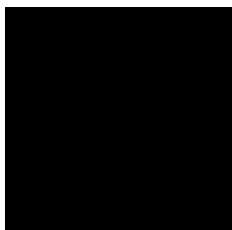
27 Graphitmetallic



26 Hammerschlag



29 Schwarz  
(RAL 9005)



31 Mattschwarz

Wir haben uns die größtmögliche Mühe gegeben, alle Farben so realitätsnah wie möglich wiederzugeben. Aufgrund drucktechnischer Einschränkungen können jedoch leichte Farbabweichungen auftreten.



**Sunrise Medical GmbH & Co. KG**

Kahlbachring 2-4

69254 Malsch/HD

Tel.: +49 (0) 72 53 / 9 80-0

Fax: +49 (0) 72 53 / 9 80-222

E-Mail: [kundenservice@sunrisemedical.de](mailto:kundenservice@sunrisemedical.de)

[www.SunriseMedical.de](http://www.SunriseMedical.de)